

# Easy

## OPERATING INSTRUCTIONS

Read these operating instructions carefully before using the machine

## MODE D'EMPLOI

Lire attentivement ce mode d'emploi avant d'utiliser la machine

## INSTRUCCIONES DE USO

Diese Leer atentamente estas instrucciones de uso antes de utilizar la máquina



ESPAÑOL FRANÇAIS ENGLISH

FOR HOUSEHOLD USE ONLY



Ideas with Passion

 **Saeco**

## IMPORTANT SAFEGUARDS

When using electrical appliances, basic safety precautions should always be followed to reduce the risk of fire, electric shock, and/or injury to persons, including the following:

- 1 Read all instructions and information in this instruction book and any other literature included in this carton referring to this product before operating or using this appliance.
- 2 Do not touch hot surfaces. Use handles or knobs.
- 3 To protect against fire, electric shock and personal injury do not immerse cord, plugs or appliance in water or other liquid.
- 4 Close supervision is necessary when any appliance is used by or near children.
- 5 Unplug from outlet when not in use and before cleaning. Allow to cool before putting on or taking off parts, and before cleaning the appliance.
- 6 Do not operate any appliance with a damaged cord or plug or after the appliance malfunctions or has been damaged in any way. Return appliance to the nearest authorized service centre for examination, repair or adjustment.
- 7 The use of accessory attachments not recommended by the appliance manufacturer may result in fire, electric shock or personal injury.
- 8 Do not use outdoors.
- 9 Do not let cord hang over edge of table or counter, or touch hot surfaces.
- 10 Do not place on or near a hot gas or electric burner, or in a heated oven.
- 11 Always turn appliance "OFF", then plug cord into the wall outlet. To disconnect, turn switch to "OFF", then remove plug from wall outlet.
- 12 Do not use appliance for other than intended household use.
- 13 Use extreme caution when using hot steam.

## SAVE THESE INSTRUCTIONS

## CAUTION

This appliance is for household use. Any servicing, other than cleaning and user maintenance, should be performed by an authorized service centre. Do not immerse base in water. To reduce the risk of fire or electric shock, do not disassemble the base. There are no user serviceable parts inside. Repair should be done by authorized service personnel only.

- 1 Check voltage to be sure that the voltage indicated on the nameplate corresponds with your voltage.
- 2 Never use warm or hot water to fill the water tank. Use cold water only.
- 3 Keep your hands and the cord away from hot parts of the appliance during operation.
- 4 Never clean with scouring powders or hard implements. Simply use a soft cloth dampened with water.
- 5 For optimal taste of your coffee, use purified or bottled water. Periodic descaling is still recommended every 2-3 months.

## INSTRUCTIONS FOR THE POWER SUPPLY CORD

- A A short power-supply cord is provided to reduce risks of getting tangled up or tripping over a longer cord.
- B Longer extension cords are available and may be used if care is exercised in their use.
- C If a long extension cord is used:
  - 1 the marked electrical rating of the extension cord should be at least as great as the electrical rating of the appliance.
  - 2 if the appliance is of the grounded type, the extension cord should be a grounding type
  - 3 the cord does not hang from the table to avoid the risk of getting caught up in it.

## GENERAL INFORMATION

This coffee machine is ideal for preparing espresso coffee using coffee beans and is equipped with a device for the distribution of steam and hot water.

This elegantly styled machine is designed for household use only. It is not suitable for continuous professional-type use.

**Warning. The manufacturer shall accept no liability for damage or injury caused by:**

- **improper use or use for other than the intended purposes;**
- **repairs carried out by anyone other than an authorized service center;**
- **tampering with the power cord;**
- **tampering with any machine component;**
- **use of spare parts and accessories other than those supplied by the manufacturer;**
- **mineral or scale build up and / or freezing damage.**

The warranty will be voided in such cases.

## TECHNICAL SPECIFICATIONS

• Voltage rating	See rating plate on appliance
• Power rating	See rating plate on appliance
• Power supply	See rating plate on appliance
• Casing material	Metal
• Size (w x h x d)	10.4 x 14.2 x 15.7 in / 265 x 360 x 400 mm
• Weight	22.05 lbs / 10 kg
• Cord length	4 ft / 1200 mm
• Control panel	Front
• Water tank (removable)	67.5 oz / 2 lit.
• Pump pressure (bars)	15
• Boiler	Stainless steel
• Coffee container capacity	1/3 lb / 180 g. of coffee beans
• Quantity of ground coffee	6 - 9 g
• Dreg drawer capacity	13
• Safety devices	Boiler pressure safety valve safety thermostat

Subject to engineering and manufacturing changes as warranted by technological developments.

Machine in conformity with European Directive 89/336/EEC (Italian Legislative Decree 476 of 04/12/92) concerning electromagnetic compatibility.

The machine complies to American regulations (c UL us) FCC Part. 15 relative to electromagnetic compatibility.



### ***TO FACILITATE INTERPRETATION***

A warning triangle draws attention to the instructions that are important for user safety. Please carefully abide by these instructions to avoid serious injury!

### ***HOW TO USE THESE OPERATING INSTRUCTIONS***

Keep these operating instructions in a safe place and make them available to anyone else who should use the coffee machine. For further information or an explanation of problems not completely or sufficiently addressed in these instructions, contact an authorized service center.

**IN THE EVENT OF AN EMERGENCY**

Immediately unplug the appliance.

**THE APPLIANCE MAY ONLY BE USED**

- In a closed place.
- To prepare coffee, dispense hot water, froth milk or heat beverages using steam.
- For household use.
- By adults in full possession of their physical and mental capacities.

**NEVER USE THE APPLIANCE**

for purposes other than those indicated above to avoid hazards.

Never place any substances in the containers other than those specified in the instruction manual.

When you fill a container, make sure all nearby containers are closed.

Fill the water tank only with fresh drinking water: hot water and/or other liquids may damage the machine. Do not use carbonated water.

The coffee grinder may be adjusted only while it is running. Do not introduce your fingers or any material other than coffee beans into the coffee grinder.

Before attempting to access the inside of the coffee grinder, switch OFF the machine and remove the plug from the electric socket.

**MAINS CONNECTION**

Connect the coffee machine to a suitable electric socket. The voltage must match the voltage specified on the appliance rating plate.

**INSTALLATION**

- Choose a perfectly level supporting surface. Do not place on a hot surface!
- Maintain a distance of 4 in / 10 cm from walls and electric or gas burners.
- Do not keep at temperatures below 32°F / 0 °C; the appliance may be damaged by freezing.
- The power outlet must be accessible at all times.
- The power cord must not be damaged, secured with clamps, placed on very hot surfaces etc.
- Do not let the power cord hang loosely (Warning: danger of tripping or of causing the appliance to fall).
- Do not use the power cord to carry or pull the coffee machine.

**HAZARDS**

- The appliance must not be used by children or by individuals unacquainted with the operating instructions.
- The appliance is dangerous for children. If left unattended it must be switched off.
- Do not leave the materials used to pack the appliance within children's reach.
- Do not direct a jet of hot steam and/or hot water toward yourself or others: danger of scalding.
- Do not introduce any objects through the openings in the appliance (Electrical hazard!).
- Do not touch the plug when your hands or feet are wet. Do not unplug the appliance by yanking at the power cord.
- Warning: contact with hot water, steam or and hot water/steam nozzle may cause burns.

**FAULTS**

- Do not use the appliance if it malfunctions or you suspect damage, e.g. after a fall.
- Repairs must be performed by an authorized service center.
- Do not use an appliance with a defective power cord. Should the power cable be damaged, it must be replaced by the manufacturer or his customer service department. (Electrical hazard!).
- Switch off the appliance before opening the service door. Danger of scalding!

**CLEANING**

- Before cleaning the appliance, unplug it and allow it to cool down.
- Avoid exposing the appliance to splashes of water. Do not immerge it in water.
- Do not dry machine components in a conventional or microwave oven.

**SPARE PARTS**

To guarantee safety, you should use only original spare parts and accessories.

**DISPOSAL**


- The packing materials can be recycled.
- Appliance: unplug the appliance and cut the power cord.
- Deliver the appliance and power cord to a service center or public waste disposal facility.



## 6 INSTALLATION / PRIMING



 The messages displayed by the machine during operation are shown on page 14.

 Important warning for using the “Aqua Prima Filter” can be found at page 14.



Check that all components are correctly placed.

Fill the coffee bean container with coffee beans.

The “Aqua Prima” filter can be installed (see pg.13). (Optional; it can be purchased separately).

Fill the tank with fresh water.

Put the plug into the socket placed on the machine rear.



See rating plate

Connect the plug placed at the opposite side of the cable to an adequate socket.

Move the ON/OFF switch to “I” to turn on the machine.

The machine is warming up; the light is flashing.

Place a container under the steam wand.

Turn the knob counterclockwise to start priming the machine.



Wait until a steady stream of water flows out from the nozzle.

Turn the knob clockwise to stop the priming process. Remove the container.

When the indicator lights are fixed, the machine is ready for use.

**Note:** Prime the machine during initial set up, if the machine has not been used for several days, after refilling the water tank, or any time the priming indicator is steadily lit:



Check the date on “Aqua Prima” filter; if filter is past its date, replace it with a new one.

**COFFEE GRINDER ADJUSTMENT**



The grinder can be adjusted by means of the knob.

Turn counterclockwise for a finer grind. Coffee flows out more slowly.

Turn clockwise for a coarser grind. Coffee flows out more quickly.

**!** Adjustment may be made only while the burr coffee grinder is operating and in increments of 2. Extreme settings not recommended.

Use coffee bean blends for espresso coffee makers. If you do not obtain the desired result, try using a different blend. Store coffee in a cool place, in an air tight container. Do not use frozen beans. You will note a change after dispensing 3 - 4 cups of coffee.

**COFFEE DOSE ADJUSTMENT**



You can adjust the quantity of coffee to be ground per cup from 6 (-) o 9 (+) grams.

Stronger coffee (towards +).

Weaker coffee (towards -).

COFFEE DOSE ADJUSTMENT - You must adjust the dose before dispensing coffee.

This adjustment will have an immediate effect on the coffee brewed.

**COFFEE IN CUPS**



To adjust the quantity of coffee dispensed to the size of your cups.

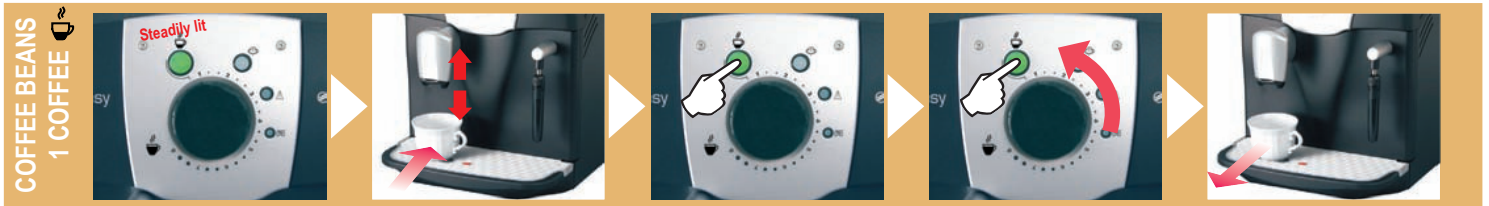
Short coffee.

Weak black coffee.

COFFEE IN CUPS - You must adjust the dose before dispensing coffee.

This adjustment will have an immediate effect on the coffee brewed.

**Warning!** Hot water and steam may cause burns! Direct the steam wand toward the drip tray.



COFFEE BEANS  
1 COFFEE

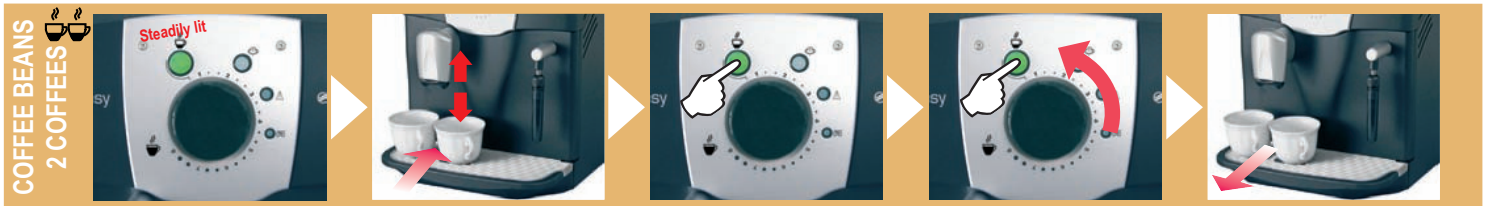
Make sure that the machine is ready.

Position a warm coffee cup under the coffee dispenser.

Press the button once to distribute 1 coffee.

To stop brewing sooner, press the button or turn the knob.

When the machine stops making the coffee, remove the cup.



COFFEE BEANS  
2 COFFEES

Make sure that the machine is ready.

Position the warm coffee cups under the coffee dispenser.

Press the button twice to distribute 2 coffees.

To stop brewing sooner, press the button or turn the knob. Should the distribution of the 1<sup>st</sup> coffee be interrupted, the 2<sup>nd</sup> coffee will not be distributed.

When the machine stops making the coffee, remove the cups.



HOT WATER

Place a container under the steam wand.

Turn the knob counter-clockwise to start dispensing water.

Wait.

When you reach the desired amount, close the knob.

Remove the container.



**Warning!** Hot water and steam may cause burns! Direct the steam wand towards the drip tray.

CAPPUCCINO



Fill a cup to 1/3 with cold milk.



Press the button to select the function. The light is flashing.



When the light is steadily lit, the machine is ready to release steam.



Position a container under the steam wand. Open the knob to discharge any residual water.



When only steam comes out, close the knob. Remove the container.



Position the cup with cold milk under the steam wand.



Open the knob to release steam.



Move the cup in a circular motion to heat and froth the milk evenly.



After frothing the milk, close the knob.



Remove the cup and place it under the coffee dispenser.



Press the button to restore the machine to normal operation. Lights are flashing.



Position a container under the steam wand.



Open the knob and dispense hot water.

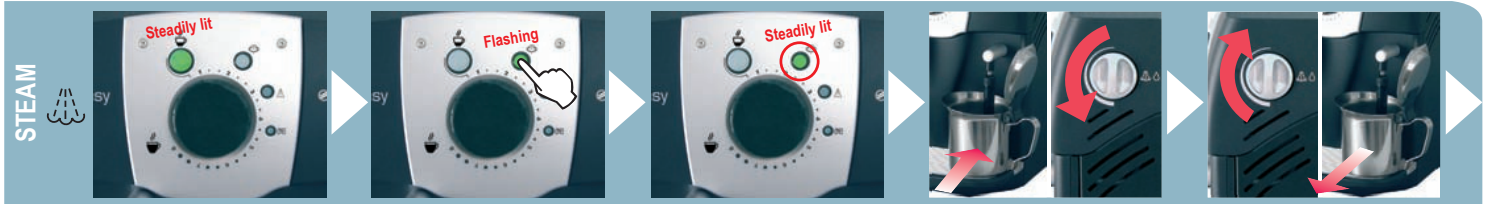


When the light remains steadily lit, close the knob and remove the container.



Dispense coffee into the cup to prepare a delicious cappuccino.

**Warning!** Hot water and steam may cause burns! Direct the steam wand towards the drip tray.



Check the machine status.

Press the button to select the function. The light is flashing.

When the light is steadily lit, the machine is ready to release steam.

Position a container under the steam wand. Open the knob to discharge any residual water.

When only steam comes out, close the knob. Remove the container.



Take and place the container under the hot water/steam wand.

Open the knob to release steam.

Move the container in a circular fashion to heat evenly.

After you have finished, close the knob.

Remove the container.



Press the button to restore the machine to normal operation. Lights are flashing.

Place a container under the steam wand.

Open the knob and dispense hot water.

When the light remains steadily lit, close the knob and remove the lid.

The machine is ready to brew coffee or dispense hot water.

**Warning!** Never use vinegar as a descaling agent. You can use any commercially available non-toxic, non-harmful descaling product for coffee machines. We recommend using a Saeco descaling agent.

Descaling is necessary every 2 months; should water be very hard, descale the machine more frequently. The machine must be on; it automatically controls the distribution of the descaling solution.



The machine must be descaled every 2 months. Remove the filter, see page 13.

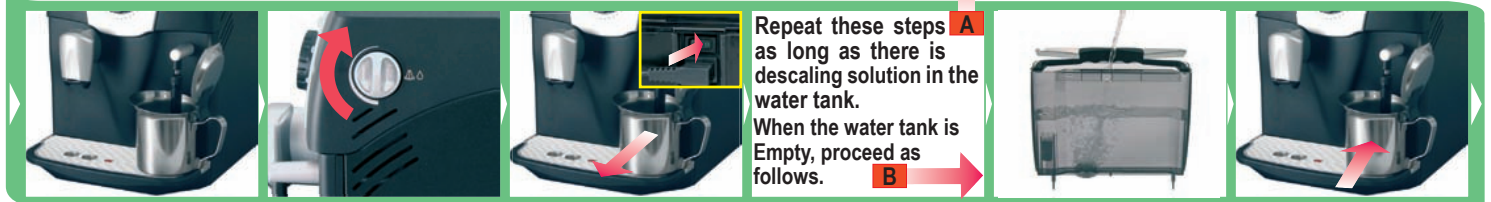
Switch off the machine.

Fill the water tank with the descaling solution.

Place a large container under the steam wand.

Switch on the machine.

Open the knob. The descaling process starts.



Dispense the descaling solution into the container.

After about 30 seconds close the knob.

Switch off the machine and remove the container.

Repeat these steps as long as there is descaling solution in the water tank. When the water tank is Empty, proceed as follows.

Rinse out the tank and fill it with fresh water.

Place a large container under the steam wand.



Switch on the machine.

Open the knob to rinse.

If the container fills up completely, empty it.

When no water is left, turn the knob to close the valve. Remove the container.

**Warning!** If the descaling cycle is interrupted, the water tank and internal machine circuits must be rinsed. Type "B" routing.

After descaling, prime the machine. Install the cartridge filter again in the water tank.

Do not dry the machine and/or its components in a microwave and/or conventional oven.

Do not immerse the machine in water and do not place any of its components in a dishwasher.

**BASIC CLEANING**

Turn the machine off. Unplug the machine.

Wash the water tank. Wash the filter inside it.

Remove the drip tray, empty it out and wash it.

Remove the dregs drawer, empty it out and wash it.

Remove the "pannarello" and clean it.

Remove the dispensing head and wash it with water.

Clean the machine, its components, and the brew group once a week at least.

**BREW GROUP**

Open the front door.

Remove the drip tray and the dregs drawer.


Press the PUSH button to release the brew group.

Unscrew the upper filter by the special wrench, and wash it.

Put the filter back in place when clean.

Wash the unit, dry it and put it back in place until hand tight. Do not press the "PUSH" button.

Set all machine components back in position. Close the door.

 The filter must be replaced when signalled by the machine, see page 14.

 Before descaling, remove the filter from the tank.

**INSTALLATION**



Remove the filter from the package.



Adjust the red date indicator to the current month.



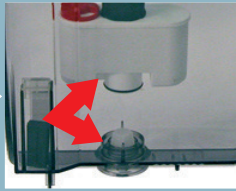
Insert the applicator and turn it clockwise to secure it to the filter.



Check where the filter positioning and reference mark is.



Put the filter into the empty tank.



The reference must be positioned in correspondence with the groove.



Press down until it is well seated in place



Turn the applicator counter-clockwise and remove it from the tank.



Fill the tank with fresh water and allow filter to soak in the tank for 30 minutes prior to first use.



Position a container under the steam wand and turn the machine on.



Open the knob and dispense water.



Empty the water tank out at intervals.



When the tank is empty, fill it again with fresh water.



Press the button. When the light flashes, release the button.

It is possible to use the machine without filter, Saeco suggests its use. If filter is not used, the machine must be descaled more frequently.

You can now use your coffee machine.

The control panel display guides users and helps them to use the machine correctly.



Steadily lit

Fill the coffee bean container with coffee beans and start the coffee brewing cycle. Fill the water tank with fresh drinking water and prime the machine. Prime the machine. Empty the dregs drawer.

**Important note: the dregs drawer may be emptied only when the machine is on. The drawer must be removed for at least 5 seconds. If you empty the drawer with the machine off, you will not be able to dispense coffee the next time you switch the machine on.**



Flashing

Fit the brew unit properly in place. Fit the drip tray and dregs drawer properly in place. Close the front door.



Flashing

Replace the water filter in the tank. After replacing the filter in the tank, reset the alarm by pressing the button for 5 seconds until the light goes off.



Flashing

Too high boiler temperature, prime the machine. Let water flow out.

**ADDITIONAL INFORMATION FOR CORRECTLY USING THE "AQUA PRIMA" FILTER.**

Please follow these simple instructions to correctly use the "Aqua prima" filter:

1. Keep the "Aqua prima" filter cool and away from sunlight; the room temperature should be between 41°F/+5°C and 104°F/+40°C;
2. Do not use the filter in temperatures over 140°F/60°C.
3. If the coffee machine is not used for 3 days, we recommend washing the "Aqua prima" filter;
4. If the coffee machine is not used for more than 20 days, it is advisable to replace the filter.
5. To store an already opened filter, seal it in a nylon bag and keep in the fridge; do not store it in the freezer to avoid damaging the filter properties.
6. Before using the filter, leave it to soak in the water tank for 30 minutes.
7. Once it is taken out of its packaging, do not keep the filter in the open air.
8. The filter must be replaced 90 days after opening the package or after treating 13 gallons/60 litres of water.

---

---

---

---

---

---


---

---

---

---

PROBLEMS	CAUSES	REMEDIES
The brewing cycle does not start.	No coffee beans	Refill bean hopper and press desired coffee button.
	No water	Fill water tank.
	Dredge drawer / waste box is full	Remove waste box while machine is on. Leave out for 5-10 seconds and put back in machine.
	Brew group missing	Remove drip tray, waste box and brew group. Put brew group back in machine until securely locks in place, put waste box in, shut service door and put drip tray back in place.
Coffee flows too quickly.	Grind is too coarse.	Adjust the grinder to a finer grind, ex. from 5 to 3. Adjust <b>only</b> while grinder is grinding and only a maximum of 2 settings at a time. It will take 3-4 cups to see results.
	Dose needs to be increased.	Turn doser towards + sign.
Coffee flows too slowly.	Grind is too fine.	Adjust the grinder to a coarser grind, ex. from 5 to 7. Adjust <b>only</b> while grinder is grinding and only a maximum of 2 settings at a time. It will take 3-4 cups to see results.
	Dose needs to be decreased.	Turn doser towards - sign.
	Filter screen in brew group is clogged.	Clean the filter screen using the key provided.
The machine does not turn on.	The machine is not connected to the power supply.	Move the main switch to ON ("I" position). Check the plug and the power outlet.

PROBLEMS	CAUSES	REMEDIES
The coffee is not hot enough.	The cups are cold.	Warm up the cups by dispensing a little hot water into the cup and letting it sit for a few seconds.
No hot water or steam is dispensed.	The steam wand is clogged.	Clear it with a thin needle or pin.   <b>During this operation, the knob must be closed and the machine must be off.</b> Then run water through steam wand to make sure unclogged.
Reduced amount of coffee, water and steam coming out of the machine; the machine takes longer to heat.	Lime scale / mineral build up in machine.	Descale the machine. If not done for a long period of time, we recommend doing 2 cycles.
The brew group cannot be removed.	The brew group is out of alignment.	Put waste box in position, close door and put drip tray in position. Switch machine on; the brew group will reset into original position.
Questions?	<b>US Customers</b> Contact Saeco USA Customer Service at 1-800-933-7876  <b>Canada Customers</b> Contact Saeco Canada at 1-514-385-5551	



**Saeco International Group S.p.A. - Via Torretta, 240  
40041 Gaggio Montano - Bologna - Italy  
Tel. +39 0534.771.111 - Fax. +39 0534.31025 - <http://www.saeco.com>**